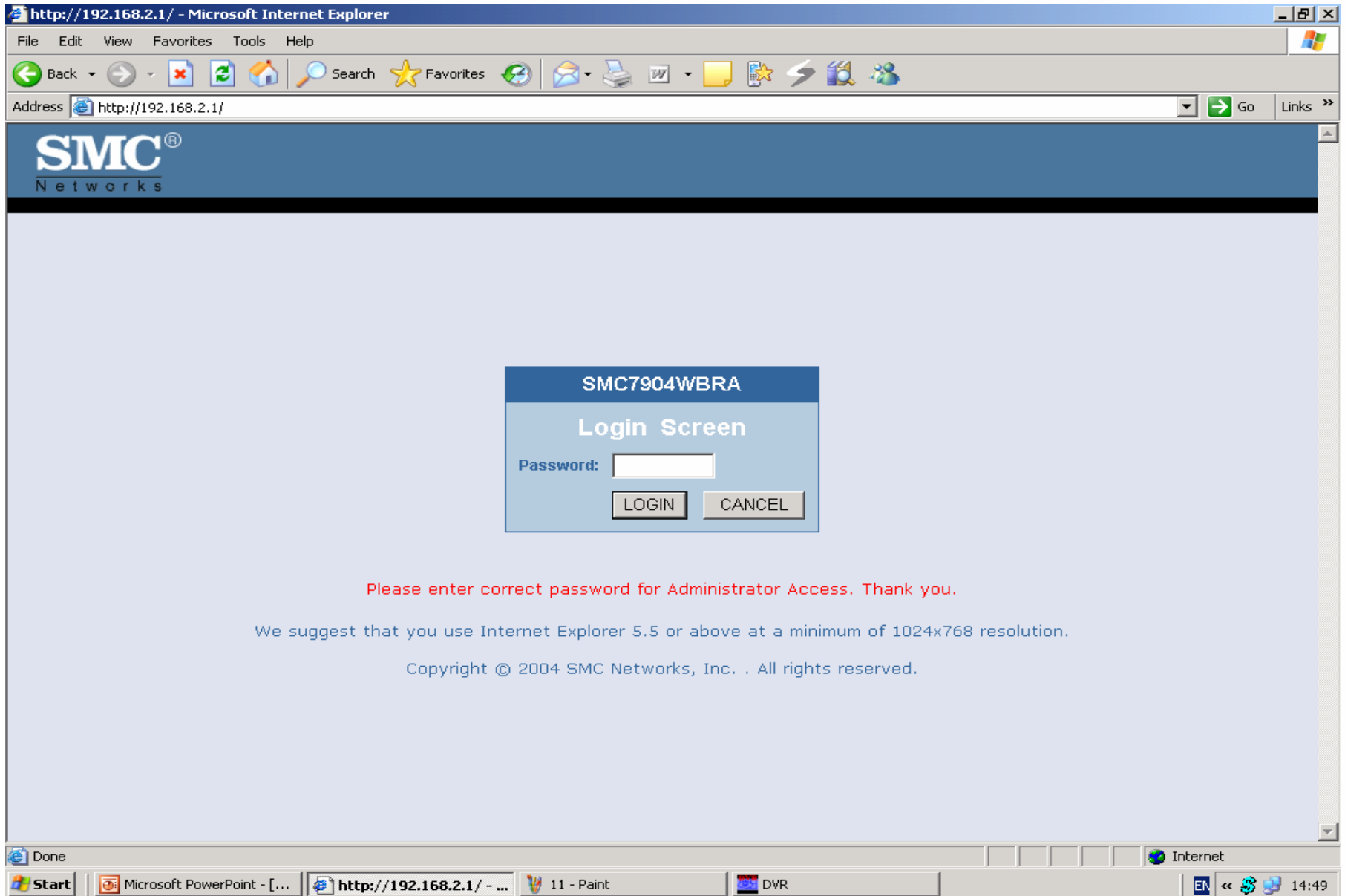


- ที่ Address ของ Browser ของ IE ให้ใส่หมายเลข Gateway ของ Router ลงไป (ในตัวอย่างคือ 192.168.2.1)

- ใส่ Password ของ Router



http://192.168.2.1/ - Microsoft Internet Explorer

File Edit View Favorites Tools Help

Back Forward Stop Refresh Home Search Favorites

Address http://192.168.2.1/ Go Links >>

SMC[®]
Networks

SMC7904WBRA

Login Screen

Password:

LOGIN CANCEL

Please enter correct password for Administrator Access. Thank you.

We suggest that you use Internet Explorer 5.5 or above at a minimum of 1024x768 resolution.

Copyright © 2004 SMC Networks, Inc. . All rights reserved.

Done Internet

Start Microsoft PowerPoint - [...] http://192.168.2.1/ - ... 11 - Paint DVR EN << >> 14:49

Microsoft Internet Explorer window showing the SMC Networks Advanced Setup page. The address bar displays <http://192.168.2.1/setupa.stm>.

The page header includes the SMC Networks logo and navigation links for Home and Logout.

The left sidebar contains a menu with the following items: SYSTEM, WAN, LAN, WIRELESS, NAT, ROUTING, FIREWALL, SNMP, UPnP, ADSL, DDNS, TOOLS, and STATUS.

The main content area is titled "Advanced Setup" and contains the following text:

The router supports advanced functions like Stateful Packet Inspection, hacker attack detection, content filtering, access control, virtual DMZ hosts, virtual servers and client filtering.

We recommend that you keep the default settings.

The Windows taskbar at the bottom shows the Start button, several open applications (Microsoft PowerPoint, Internet Explorer, Paint, DVR), and the system tray with the date and time (14:50).

Microsoft Internet Explorer window showing the NAT Settings page of an SMC Networks router. The browser address bar displays `http://192.168.2.1/setupa.stm`. The page title is **NAT Settings**. The main content area explains Network Address Translation (NAT) and provides a radio button control to **Enable or disable NAT module function**, with **Enable** selected. A **SAVE SETTINGS** button is visible on the right. The left sidebar contains a navigation menu with categories like **SYSTEM**, **WAN**, **LAN**, **WIRELESS**, **NAT**, **ROUTING**, **FIREWALL**, **SNMP**, **UPnP**, **ADSL**, **DDNS**, **TOOLS**, and **STATUS**. The Windows taskbar at the bottom shows the Start button, several open applications (Microsoft PowerPoint, Paint, DVR), and the system clock at 14:50.

- มาที่ **Virtual Server** ใต้ **IP address** ของตัวบันทึกภาพ (**DVR**)

www.np-tech.com

- ใต้ **Lan port** และ **Public port** ให้เป็น 80 (ในที่นี้เราจะดูผ่าน **Browser** ของ **IE**)

www.np-tech.com

www.np-tech.com

ถ้าเกิดว่ายังไม่สามารถดูได้ลองเปลี่ยนเป็นพอร์ต 8000

http://192.168.2.1/setupa.stm - Microsoft Internet Explorer

File Edit View Favorites Tools Help

Address http://192.168.2.1/setupa.stm

SMC
Networks

Advanced Setup

Home Logout

SYSTEM

Virtual Server

You can configure the router as a virtual server so that remote users accessing services such as the Web or FTP at your local site via public IP addresses can be automatically redirected to local servers configured with private IP addresses. In other words, depending on the requested service (TCP/UDP port number), the router redirects the external service request to the appropriate server (located at another internal IP address). This tool can support both port ranges, multiple ports, and combinations of the two.

For example:

- Port Ranges: ex. 100-150
- Multiple Ports: ex. 25,110,80
- Combination: ex. 25-100,80

No.	LAN IP Address	Protocol Type	LAN Port	Public Port	Enable		
1	192.168.2.	TCP			<input type="checkbox"/>	Add	Clean
2	192.168.2.10	TCP&UDP	80	80	<input checked="" type="checkbox"/>	Add	Clean
3	192.168.2.	TCP			<input type="checkbox"/>	Add	Clean
4	192.168.2.	TCP			<input type="checkbox"/>	Add	Clean
5	192.168.2.	TCP			<input type="checkbox"/>	Add	Clean
6	192.168.2.	TCP			<input type="checkbox"/>	Add	Clean
7	192.168.2.	TCP			<input type="checkbox"/>	Add	Clean
8	192.168.2.	TCP			<input type="checkbox"/>	Add	Clean

Done

Start Microsoft PowerPoi... DynDNS -- Dynamic... http://192.168.2.... 14 - Paint Routing 10 - ACDSee 8 Phot... EN 14:09

-ที่ Menu DDNS ให้ใส่ค่า Provider , Domain name , Account , Password ที่ลงทะเบียนไว้

-แล้วเลือก Save Settings แล้วเลือก Logout ก็เสร็จสิ้น

The screenshot shows a web browser window displaying the SMC Networks Advanced Setup interface. The browser's address bar shows the URL `http://192.168.2.1/setupa.stm`. The page title is "SMC Networks" and the main heading is "Advanced Setup". A navigation menu on the left includes SYSTEM, WAN, LAN, WIRELESS, NAT, ROUTING, FIREWALL, SNMP, UPnP, ADSL, DDNS, TOOLS, and STATUS. The "DDNS (Dynamic DNS) Settings" section is active, showing a description of Dynamic DNS and a configuration form. The form includes a "Dynamic DNS" toggle set to "Enable", a "Provider" dropdown menu set to "DynDNS.org", a "Domain Name" text box containing "thongpapai.dyndns.org", an "Account / E-mail" text box containing "thongpapai", and a "Password / Key" text box with masked characters. At the bottom right of the form area are buttons for "HELP", "SAVE SETTINGS", and "CANCEL". The Windows taskbar at the bottom shows the Start button, open applications (Microsoft PowerPoint, Internet Explorer, Paint), and the system tray with the date and time (15:22).

Address: `http://192.168.2.1/setupa.stm`

SMC[®] Networks Advanced Setup

Home Logout

SYSTEM

WAN

LAN

WIRELESS

NAT

ROUTING

FIREWALL

SNMP

UPnP

ADSL

DDNS

TOOLS

STATUS

DDNS (Dynamic DNS) Settings

Dynamic DNS provides users on the Internet a method to tie their domain name(s) to computers or servers. DDNS allows your domain name to follow your IP address automatically by having your DNS records changed when your IP address changes.

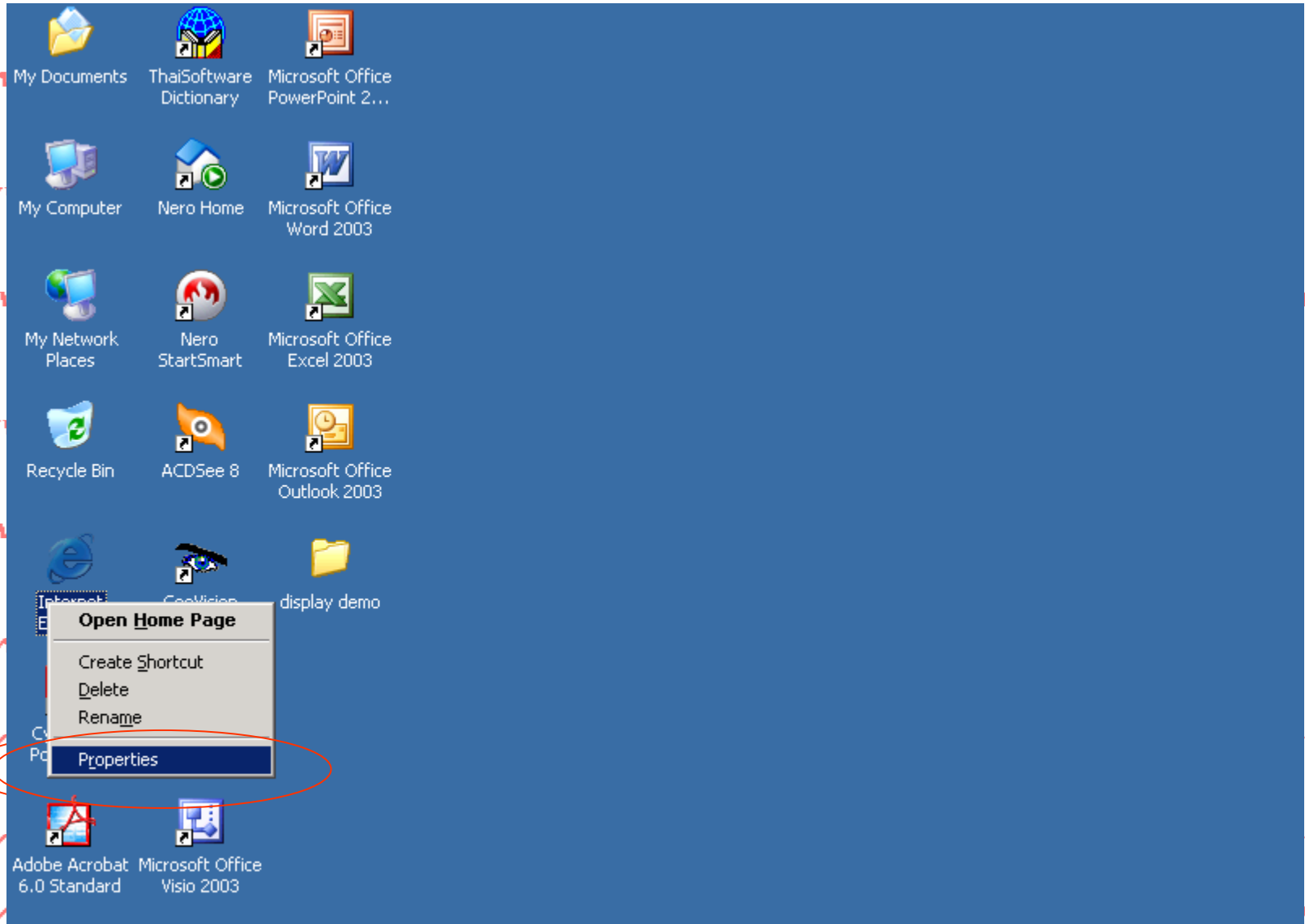
Dynamic DNS	<input checked="" type="radio"/> Enable <input type="radio"/> Disable
Provider	DynDNS.org
Domain Name	thongpapai.dyndns.org
Account / E-mail	thongpapai
Password / Key	••••••••

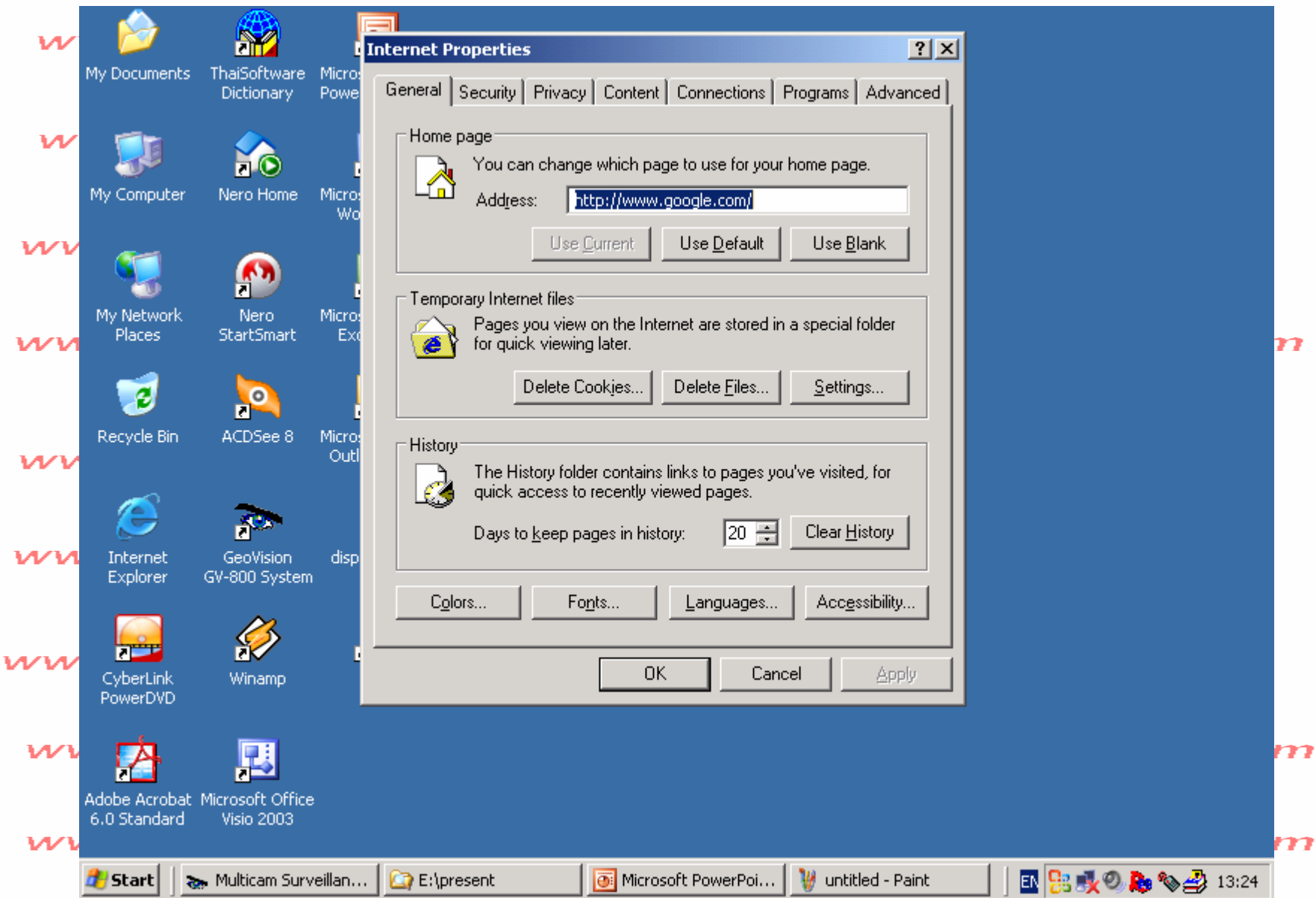
HELP SAVE SETTINGS CANCEL

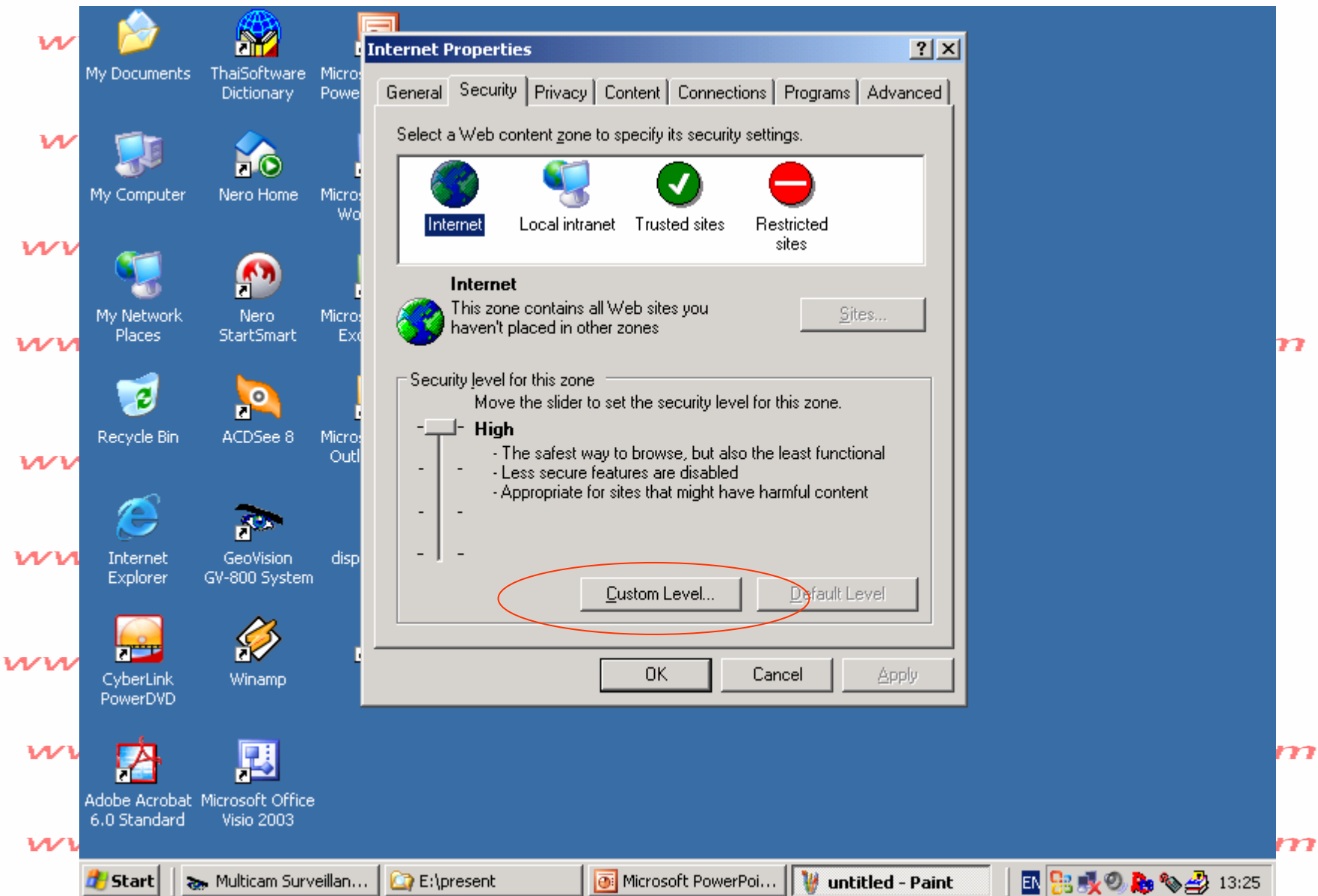
Done Internet

Start Microsoft PowerPoint - [...] `http://192.168.2.1/se...` 23 - Paint EN 15:22

การเปิด ACTIVE X







เลือก **Enable** ทั้งหมดที่มีคำว่า **ActiveX**

